

- ◇ This cloning software is designed for data entry, settings, and cloning of the IP100H IP ADVANCED RADIO SYSTEM TRANSCEIVER.
- ◇ The CS-IP100H has a Help file to describe functions and operation.

SYSTEM REQUIREMENTS

The following PC and cables are required to use the CS-IP100H.

(As of April 2017)

PC

- Microsoft® Windows® 10 (32/64 bit)
- Microsoft® Windows® 8.1 (32/64 bit)
(Except for Microsoft® Windows® RT)
- Microsoft® Windows® 7 (32/64 bit; SP1 or later)
- USB 1.1 or 2.0 port

Cables (Purchase separately)

- OPC-478UC CLONING CABLE
- OPC-2144 PLUG ADAPTER CABLE

NOTE:

- Icom is not responsible for problems using a PC with the above OS installed.
- In this sheet, service pack is described as "SP."

NOTE:

- Before connecting the OPC-478UC CLONING CABLE to your PC, you must install its USB driver. Please read the driver installation guide carefully, before installing it.
- The driver is not supported by the Windows® automatic recognition system.

OPERATION NOTE

- When operating the PC or external devices, see their instruction manuals for operational details.
- The contents of this sheet, the software associated with the CS-IP100H, and the appearance of the CS-IP100H are all subject to change without notice.
- The description on this instruction sheet is based on Microsoft® Windows® 7.
- The displayed dialog boxes, indications or operations may differ slightly, depending on your system settings, type of OS and its SP level.

PROCEDURES

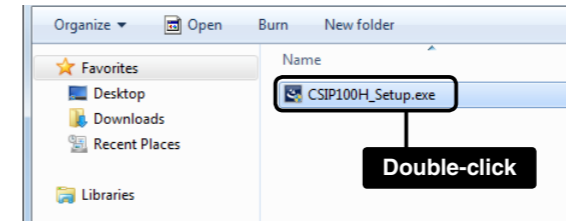
Requires the following procedures for the first usage of the CS-IP100H.

Step 1 PREPARATIONS	<ul style="list-style-type: none"> • PC • Cables 	CS-IP100H INSTRUCTION (This sheet)
Step 2 USB DRIVER INSTALLATION	Install the USB driver following the installation guide that comes with the OPC-478UC.	OPC-478UC INSTALLATION GUIDE (Other sheet)
Step 3 CS-IP100H INSTALLATION	Install the CS-IP100H following this instruction sheet.	CS-IP100H INSTRUCTION (This sheet)
Step 4 CONNECTION	Connect the transceiver and a PC following this instruction sheet, and then turn ON the transceiver.	

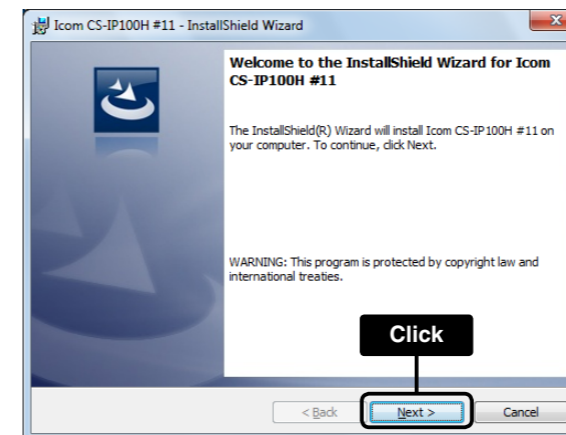
INSTALLATION

When installing the software, log in as the **administrator**.

- ① Make sure Windows has completed its startup, and no other applications are running.
- ② Save the downloaded installer file to a local PC.
- ③ Double-click "CSIP100H_Setup.exe."
 - ▨ To display the extension of the file, change the folder option.

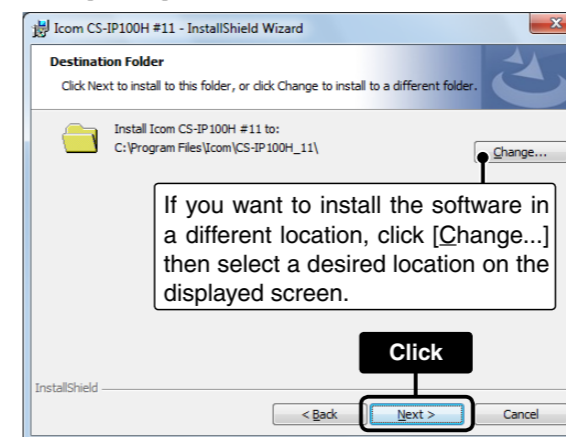


- ④ If "User Account Control" appears, click [Yes] to continue.
- ⑤ Click [Next>].



NOTE:
If your PC already has the software installed, the uninstallation or update screen appears.

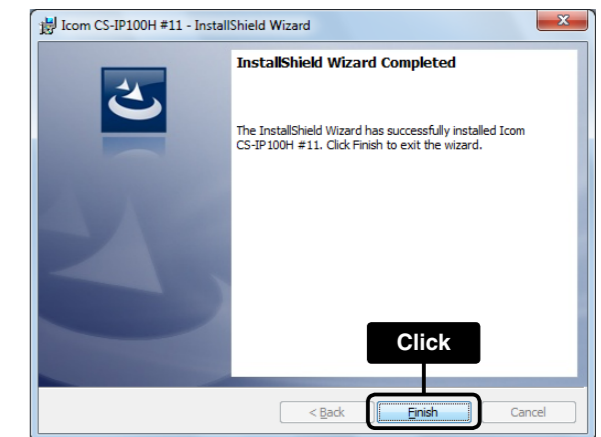
- ⑥ Click [Next>].



- ⑦ Click [Install].



- ⑧ Click [Finish].



Uninstalling the software

Before uninstalling the software, be sure to close it.

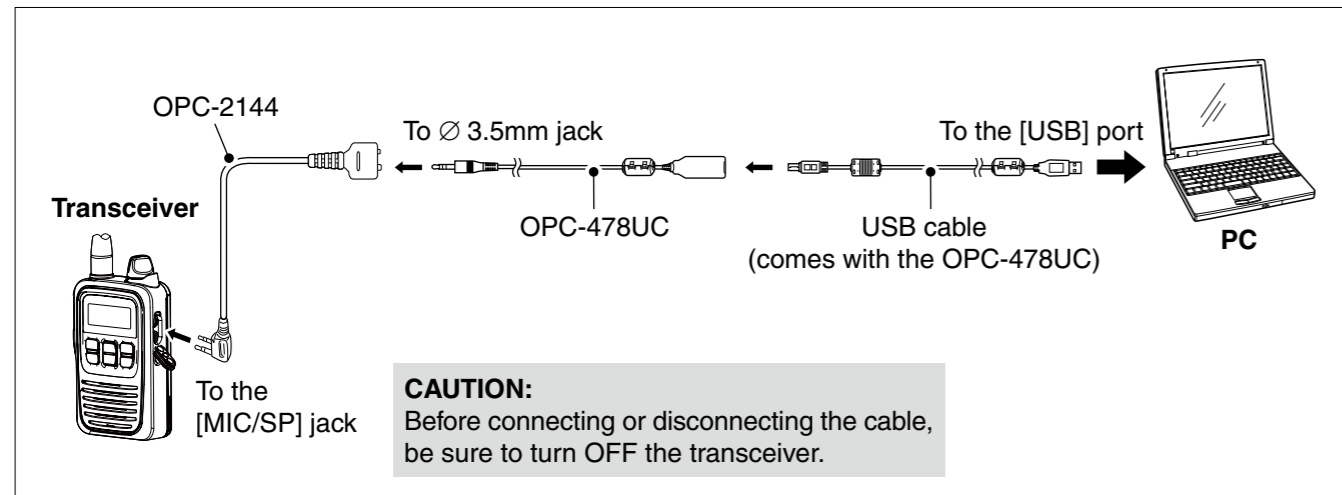
- Make sure you are logged in as the administrator.
- ① Click the <Start> button and then click <Control Panel>.
 - ② Click <Uninstall a program>.
 - ③ Right-click <Icom CS-IP100H #11>, and then click <Uninstall>.
 - ④ Click [Yes] in the uninstallation confirmation dialog.
 - ⑤ If the "User Account Control" dialog appears, click [Yes] to uninstall.

Reinstalling the software

Once the uninstalling is complete, you can reinstall the CS-IP100H by following the steps in "INSTALLATION" described above.

CONNECTION

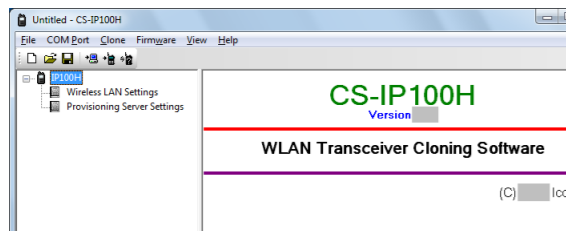
Connect the OPC-478UC CLONING CABLE and OPC-2144 PLUG ADAPTER CABLE between the transceiver and the PC, as shown below.



STARTING THE CS-IP100H

- 1 Click the <Start> button, and then click <All Programs>. Click the Icom folder, and then click the CS-IP100H icon in the CS-IP100H folder to start the software.
 - You can also start the software by simply double-clicking the CS-IP100H short cut on the desktop.

- 2 Set the wireless Access Point settings in the "Wireless LAN Settings" sheet, and the IP1000C settings in the "Provisioning Server Settings" sheet.



Programming information

- To prevent data loss, you should first read (download) all the transceiver's data before entering or editing parameters using the cloning software.
- Before programming, make a backup file onto your PC. A backup file allows easy restoring even if the setting data in the transceiver is accidentally deleted.
- While reading or writing cloning data, **NEVER** turn OFF the transceiver or the PC, and **NEVER** disconnect the cables. Otherwise, the data could be corrupted or deleted.

About the Help file

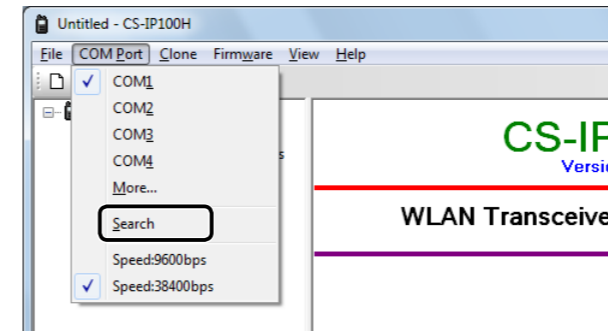
Please refer to the Help file of the cloning software for assistance with the functions or settings. To open the Help file, click [H]elp in the top menu of the cloning software and select "Contents."

FOR YOUR REFERENCE

◇ COM Port Searching

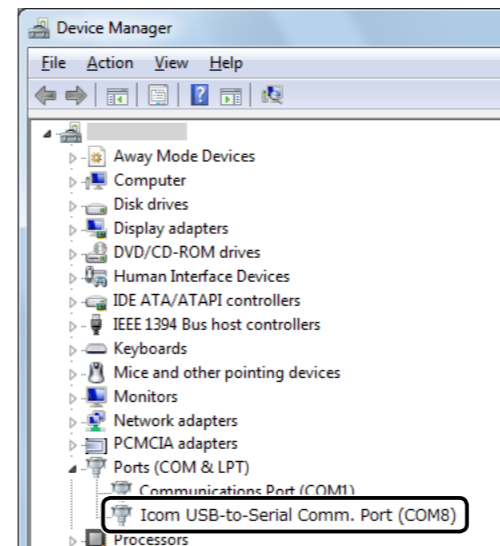
To set the COM port number, first confirm the transceiver is connected to the PC with the OPC-478UC and OPC-2144.

Click [Search] to search for the COM port number that the cloning cable is connected to, and automatically set the number.



NOTE:

- When the OPC-478UC and OPC-2144 are connected incorrectly, or the transceiver is OFF, the COM port Search function does not work correctly.
- You can confirm the COM port number in [Device Manager], as shown below.

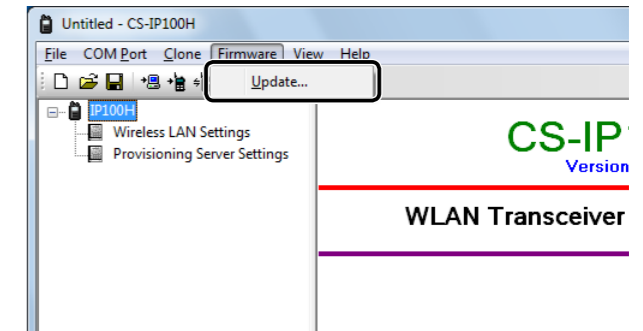


◇ Firmware updating

Basically, the IP100H firmware is automatically updated through the IP1000C.

However, you can also manually update the firmware through the CS-IP100H.

- 1 Click [Update...] in the [Firmware] menu.
- 2 Select a downloaded firmware file in the displayed dialog.
- 3 When "Starts the transceiver's firmware update." appears, click [Yes] to start the update.



NOTE:

- While updating, **NEVER** turn OFF the transceiver or the PC, and **NEVER** disconnect the cables. Otherwise, the transceiver firmware will be corrupted.

✓ IMPORTANT!

You can download the latest firmware from the Icom website at the following URL:

<http://www.icom.co.jp/world/index.html>

Firmware is important for the basic system control of your equipment. An interruption or a malfunction during downloading may cause a failure in the data rewriting, and your equipment may stop functioning normally. If such a failure of the firmware rewriting results in your equipment not functioning normally, Icom Inc. expressly denies and is free from any and all responsibility arising from the result of damage from such an event.

Icom, Icom Inc. and the Icom logo are registered trademarks of Icom Incorporated (Japan) in Japan, the United States, the United Kingdom, Germany, France, Spain, Russia, Australia, New Zealand, and/or other countries.

Microsoft and Windows are registered trademarks of Microsoft Corporation in the United States and/or other countries.

All other products or brands are registered trademarks or trademarks of their respective holders.

Icom Inc.

1-1-32 Kamiminami, Hirano-ku, Osaka 547-0003, Japan

Count on us!

A-7121-1EXa Printed in Japan
© 2014-2017 Icom Inc.